



Association  
mondiale  
de la Route



World Road  
Association

---

## SESSION 3

# Management of emergency situation

Yukio ADACHI  
Hanshin exressway Co., Ltd.

# PIARC TC1.5 Risk management

Number	Issues
1.5.1	Role of risk assessment in policy development and decision making
1.5.2	Methodologies and tools for risk assessment and management applied to road operations
<b>1.5.3</b>	<b>Management of emergency situations</b>
1.5.4	Risk and emergency management for combined and large hazards

# WG3 member

Member	Name	Country
Leader	BENEKOS, Ioannis	GRE
Co-leader [Issue1.5.3]	BLOMME, Maarten	BEL
Co-leader [Issue1.5.4]	ADACHI, Yukio	JPN
Member	NDOUMBA MOUELLE, Francis	CAM
	NGOA, Kizito	CAM
	TOMAS MARTINEZ, Pedro	ESP
	GRUBER, Jan	CZE
	GLIDDON, Brett	NZL
	POPA, Vasile	ROM
	ZBARNEA, Constantin	ROM
Former member	LEGAULT, Johanne	CAN-QBC
	BELDA ESPLUGUES, Enrique	ESP

# Characterization of Disaster

## RETURN PERIOD

2010 Chemical spill  
In Hungary



2009 Heavy rain  
In Taiwan



2011 East Japan EQ.



## INTENSITY

## COMPLEXITY



# Characterization of Disaster

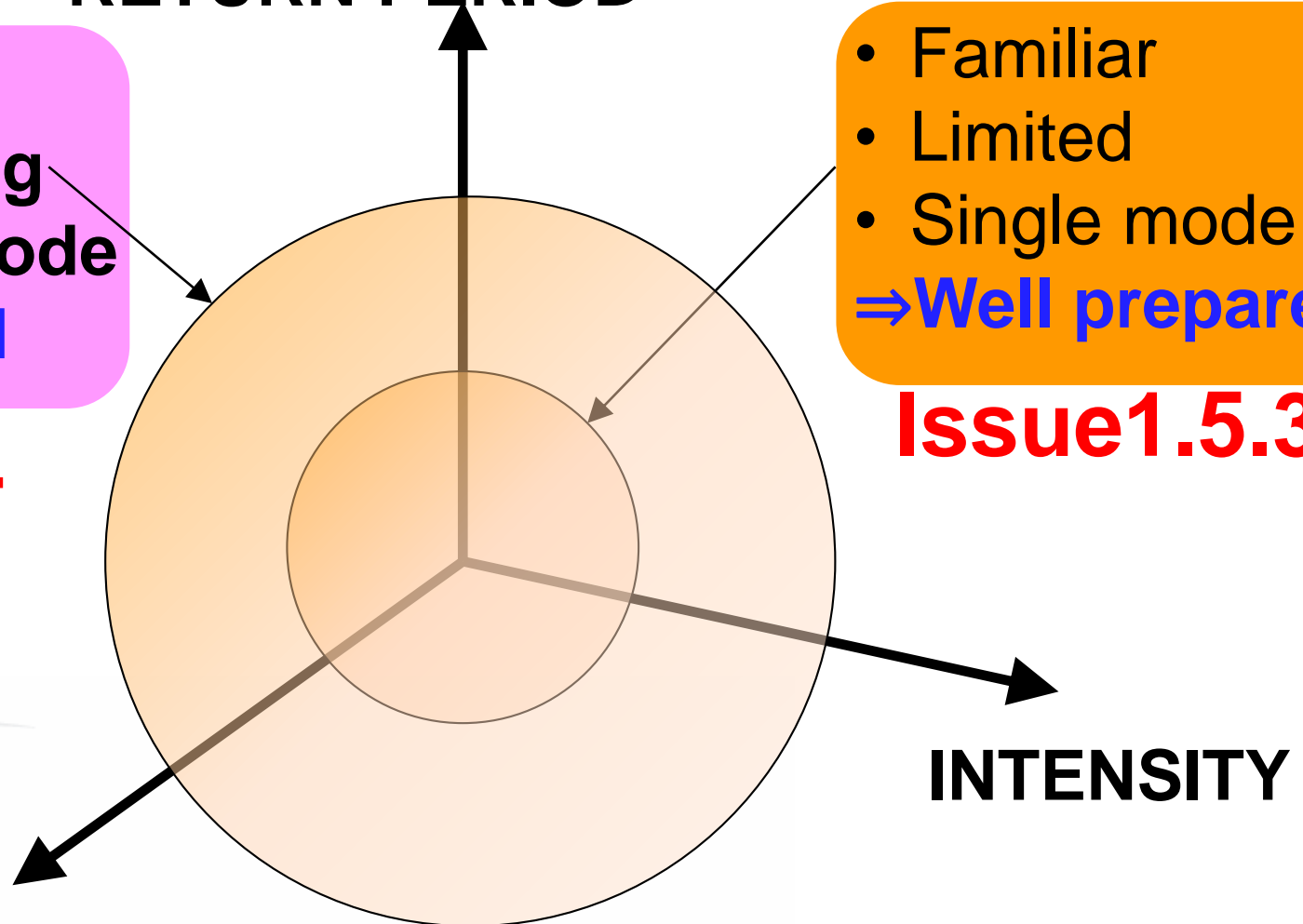
RETURN PERIOD

- Unfamiliar
  - Wide & strong
  - Combined mode
- ⇒ Not prepared

Issue 1.5.4

- Familiar
  - Limited
  - Single mode
- ⇒ Well prepared

Issue 1.5.3



COMPLEXITY

INTENSITY



# Issue 1.5.3

## Management of emergency situations

### Strategy

- From selected case studies analyze how emergency situations affecting the road transport system are managed.
- Investigation will consider in particular the issues of coordination between the different authorities, the coordination between the different modes of transport, the information to users, the response of the public.



# Issue 1.5.3

## Management of emergency situations

### *Output*

- Recommendations based on a presentation of case studies.



# Coordination between ...

Road-related organization

Non-road-related organization  
or road users

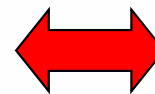
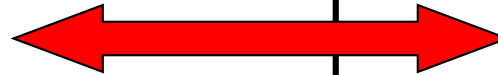
Coordination  
between the Ministries

Coordination  
between road authorities

Private sector

Non-road-related  
organization

Road users





# ITS Technology for emergency management

## MANAGEMENT AND CONTROL



## BROADCAST INFORMATION

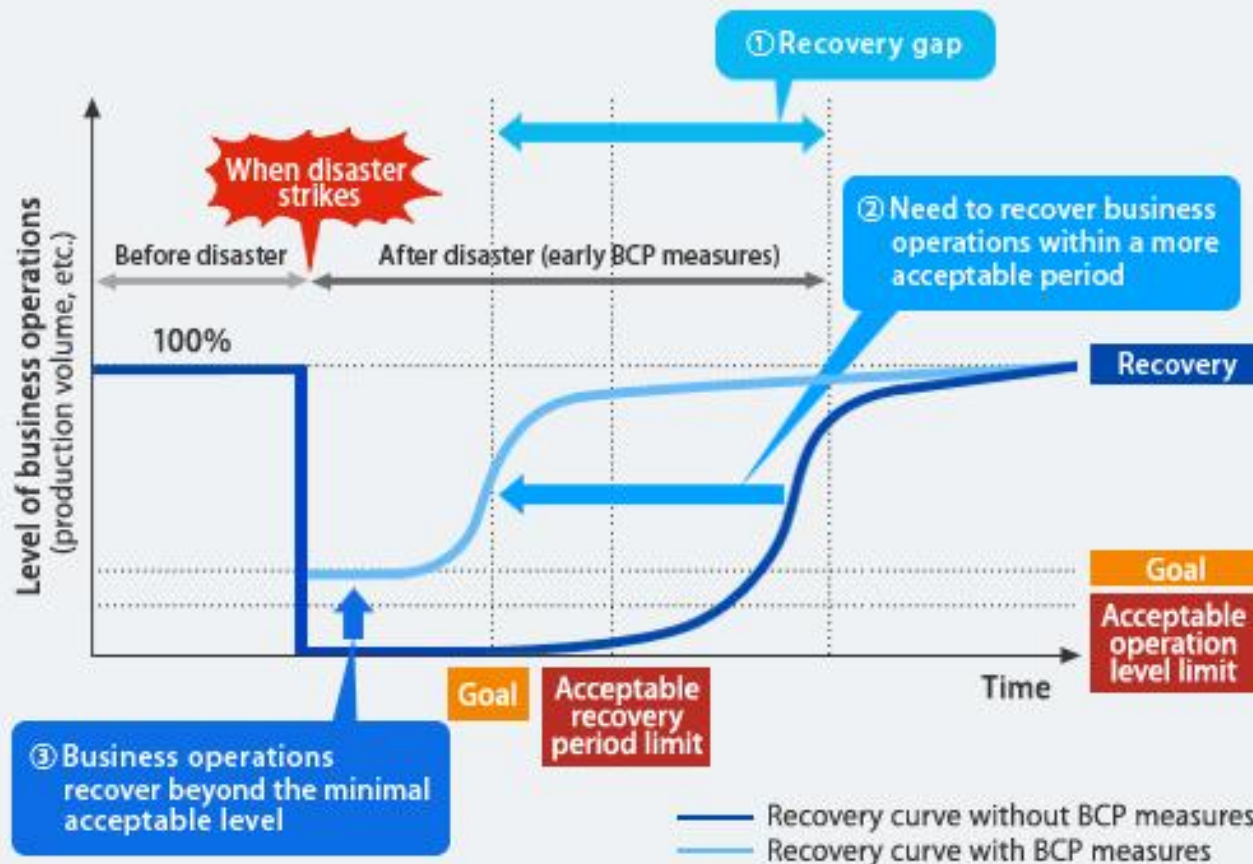


## COLLECT INFORMATION



# Road Authority Business Continuity Plan

Chart1 BCP concept diagram



- Pre-event considerations
- Post-event considerations



# World road conference (2015)

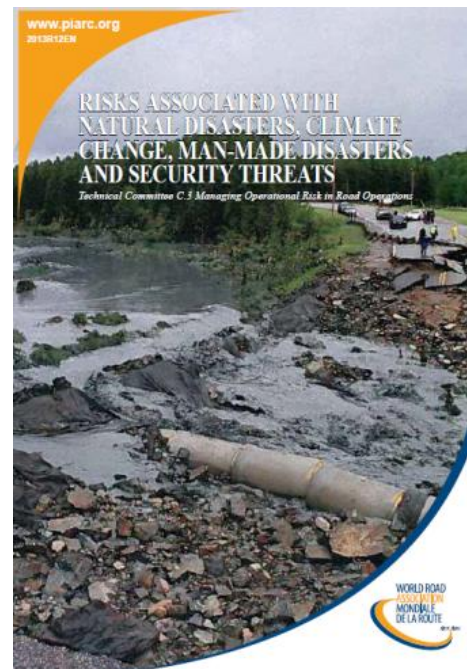
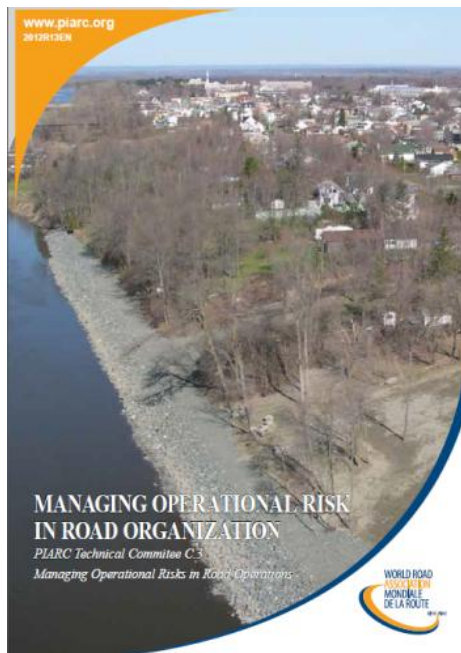
- TC1.5 will host a technical session related to risk and emergency management at Seoul WRC (2015).

- Please visit us.



# PIARC Web site

- The report of the last cycle is available at the site below.



<http://www.piarc.org/en/publications/technical-reports/>

# Presentations in Session 3

	Title	Presenter	
1	Coordination and cooperation in emergency situation in Japan	Yukio ADACHI	JAPAN
2	Risk management tools in the transport sector	Jan GRUBER	CZECH REPUBLIC
3	Risk and Emergency Management as a Basis for Road Intelligent Transportation Systems (I.T.S.) Planning and Operation	Pedro TOMAS	SPAIN
4	Collapsed Tonalá Bridge – Case study	Luis ROJAS NEITO	MEXICO
5	Prioritizing road reconstruction after a natural disaster	Roberto AGUERREBERE	MEXICO



# Enjoy Session 3 !

